



# Rotary Club of Surat West

R.I. District 3060 Zone 4-B



CREATE HOPE  
in the WORLD

Rotary Year 2023 - 2024

Club No 31549 / Charter Date : 30th April 1996



: rotarysuratwest



: rotarysuratwest



: www.rotaryclubofsuratwest.org

# SPARK

Issue No.: 10 / 2023 - 2024



**Rtn. Gordon R. McNally**  
R.I. President - 2023 - 2024



**Rtn. Nihir Dave**  
D.G. 3060 - 2023-2024



**Rtn. Sonal Shah**  
Club President



**Rtn. Meeta Kapoor**  
Hon. Club Secretary

Bulletin Editor : Rtn. Mausam Jalan

**FROM THE DESK OF BULLETIN EDITOR**



My dear Rotary Surat West family,

In this issue of spark I have tried to explain in detail about the Rotary Friendship Exchange Program **(RFE)**

Senior Members are well aware of this program and many members from our club have already taken benefit of this Program.

RFE is a great way of exploring the world and making life long friends or business associates from other countries

New Members can contact PP Rtn Bhavesh Shah to know more about RFE

Regards

**Rtn Mausam Jalan**

**Bulletin Editor – 2023 -24**

# **Experience different cultures and build international friendships through Rotary Friendship Exchange**

## **What is Friendship Exchange?**

Friendship Exchange is an international exchange program for Rotary members and friends that allows participants to take turns hosting one another in their homes and clubs.

Participants may travel as individuals, couples, families, or groups, and may be Rotary members or not.

## **Benefits of an exchange**

Broaden international understanding

Explore a profession or job in a different context

Build enduring friendships

Gain opportunities for active project involvement and support

Learn about a region's people, food, languages, customs, and history

Find partners for grants

Establish a foundation for peace and service. This can be done virtually or in person in a way that builds peace.

## **Choose a destination**

Explore our Exchange Finder Map to view current exchange locations and the districts that serve them. Connect with the district's Rotary Friendship Exchange chair for help finding potential international hosts and planning your itinerary.



## Define your purpose

Friendship exchanges are organized around at least one of three themes: culture, service, and vocation.

## Fund your exchange

All exchanges are paid for by the participants or their districts. Hosts are not expected to assume a significant financial burden. Club or district funds may be available to offset the costs of exchanges that have a vocational emphasis.

## Share your story

After your trip, submit a report to your district, as well as to [rotary.service@rotary.org](mailto:rotary.service@rotary.org). It's your chance to tell us about your experience, make suggestions, and share what you learned.

**This Year from our Club PP Rtn Gita Modi and PP Rtn Hitendra Mody along with Ann Sonal Mody have applied for the RFE (Rotary Friendship Exchange) Program:**



## ROTARY FRIENDSHIP EXCHANGE

# NEW FRIENDS AWAIT IN EVERY CORNER OF THE WORLD.

Rotary



[rotary.org/en/our-programs/  
friendship-exchange](https://rotary.org/en/our-programs/friendship-exchange)

### ON A ROTARY FRIENDSHIP EXCHANGE, YOU'RE NEVER JUST A TOURIST.



You get to genuinely experience another culture, guided by friends in Rotary. Exchange participants take turns hosting and visiting one another, forging friendships that last a lifetime.



Friendship Exchange participants travel as individuals, couples, families, or groups, and may include Rotary members and nonmembers. Prospective exchange teams communicate with one another in advance to decide on the purpose, format, timing, logistics, and duration of each visit.



All exchanges are funded by the participants and their districts, and hosts are not expected to assume a significant financial burden. Visitors are rewarded with warm hospitality and an international travel experience unlike any other.



An exchange can be the starting point for a long-term international relationship between clubs. Participants often use their new friendships as the basis for partnering on service projects that create lasting change.



Exchanges also offer unique chances for cultural immersion and interchange. Some incorporate educational opportunities for professionals of any age to build global understanding and boost vocational and leadership skills. They can include cultural experiences, vocational activities, fellowship opportunities, and much more.



Interested in finding potential exchange partners? Contact a district Rotary Friendship Exchange chair, or take advantage of opportunities to connect with Rotarians from other parts of the world at the annual Rotary International Convention and other events.



For more information, go to  
[rotary.org/en/our-programs/  
friendship-exchange](https://rotary.org/en/our-programs/friendship-exchange).



# ROTARY FRIENDSHIP EXCHANGE

2

## Agenda

- Rotary Friendship Exchanges
- Exchange Guidelines
- Virtual Exchanges
- Rotary Friendship Exchange Themes
- Culture-oriented Exchanges
- Service-oriented Exchanges
- Vocation-oriented Exchanges
- District [Your # District] RFE
- Resources and Support

Exchange participants work together to determine all aspects of an exchange. Participants:

**- Determine all details, including exchange location and dates, travel & housing, and the schedule itself**

**- Assume all financial responsibilities associated with program participation. Check with your club or district if funding is available to help offset expenses.**

3

## Rotary Friendship Exchanges

Rotary Friendship Exchanges: build goodwill, foster peace, strengthen international friendships, expand international understanding and create a more global community



Rotary Friendship Exchange is an international program for Rotary members and friends that allows participants to take turns hosting one another in their homes and clubs. Exchanges allow Rotarians and non-Rotarians alike to

**experience different cultures**

**broaden their international understanding**

**foster good will**

**explore their professions in a different context**

**build longstanding friendships**

**establish a foundation for peace and service**



# Exchange Guidelines

Exchanges are coordinated at the district level and reflect the interests and preferences of participants



Exchange participants work together to determine all aspects of an exchange. Participants:

- **Determine all details, including exchange location and dates, travel & housing, and the schedule itself**
- **Assume all financial responsibilities associated with program participation. Check with your club or district if funding is available to help offset expenses.**
- **Secure travel insurance**

After an exchange, participants are encouraged to submit a report to Rotary with program reactions, suggestions for improving relationships between the two countries , and what was learned about Rotary's work in a different part of the world to inspire other Rotary districts to plan their own exchanges.



# Virtual Exchanges



Build relationships that can transition seamlessly to future in-person exchanges.

- Share cultural traditions. Organize a virtual cooking class to introduce national dishes or take a virtual museum or landmark tour.
- Introduce each other to local industries or how a specific profession is practiced in each community.
- Collaborate on a digital service project, like offering online language classes.

# Rotary Friendship Exchange Themes

**Culture:** Experiences that highlight a region's ethnicity, food, language, history, landmarks, hobbies through Rotary Fellowships, and more

**Service:** Opportunities for hands-on project involvement and support

**Vocation:** Exploring specific professions or jobs in a different cultural context

Districts should structure exchanges around one (or more) of the following themes:

**Cultural Exchanges:** Experiences that highlight a regions ethnicity, food, language, history, and more

**Service Exchanges:** Opportunities for hands-on project involvement and support

**Vocational Exchanges:** Exploring specific professions or jobs in a different cultural context

**Trips often lead to long-term relationships between the two partnering districts, and clubs often form twin club relationships or find partners for global grants with clubs participating on exchanges.**



## Group Cultural Exchanges



As of July 2017, districts are encouraged to plan group cultural exchanges, a subset of RFEs. These types of exchanges place a particular emphasis on cultural immersion and ideally incorporate non-Rotarian young professionals, or those in the transitional stages of their career to help foster greater awareness, intercultural understanding, deeper connections, and a broader global mindset.



10

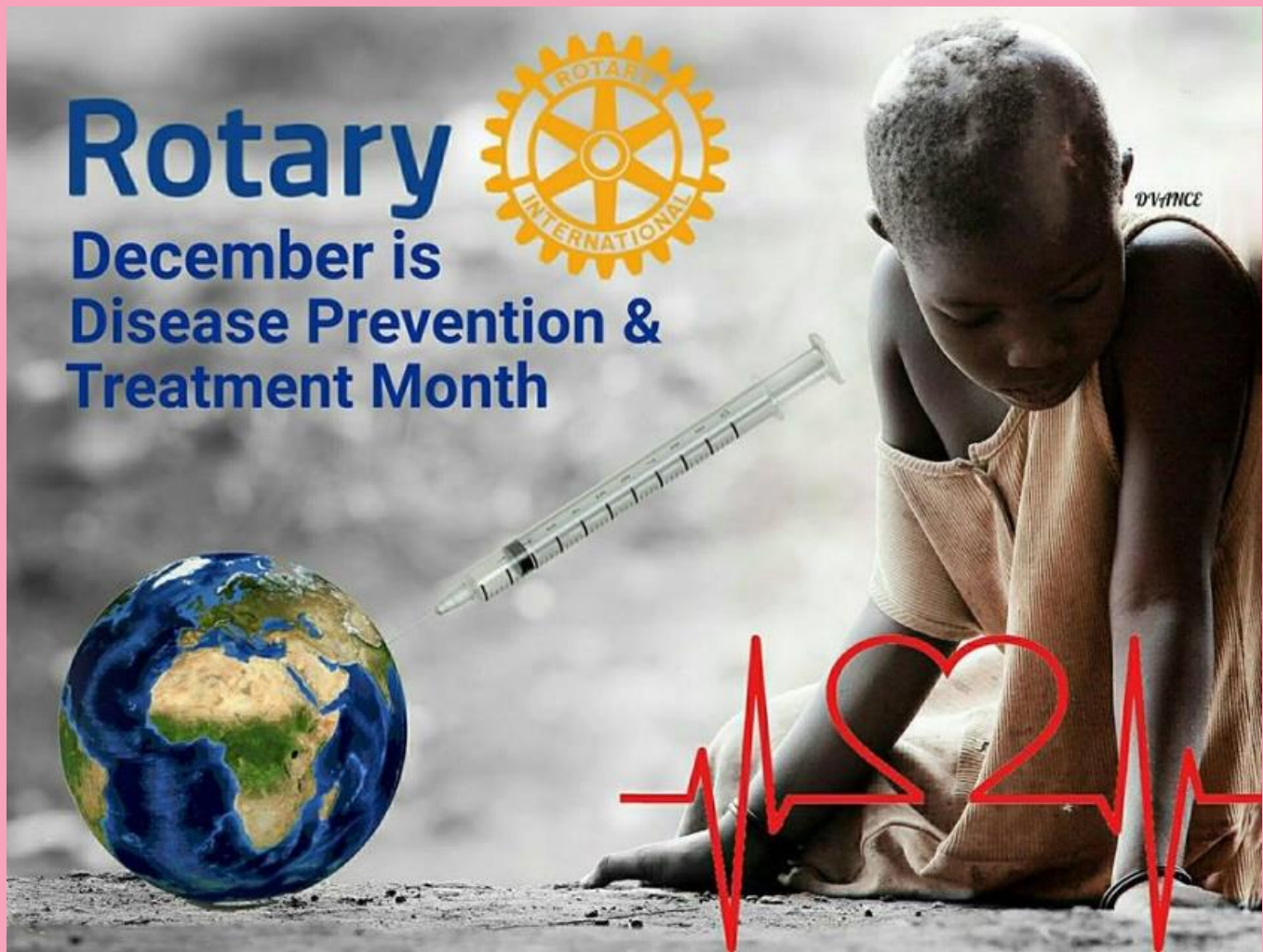
## Service-oriented Exchanges

Teams from USA (District 5330) and India (District 3141) were warmly welcomed in Lithuania (District 1462) for an exchange in May of 2020.





## December is Disease Prevention and Treatment Month



This is one of the Foundations Areas of Focus and one in which many of us would be aware of the numerous projects around the world supported by clubs and the Foundation. Look at your role in promoting improved health at home and abroad and supporting these vital programs that contribute not only to healthy communities but peaceful communities.

Disease prevention and treatment takes on many forms, from supporting studies to helping immunize people to improving drinking water and the sanitation infrastructure. The world relies on Rotary to tackle these global challenges, and to set an example for others to follow.

Rotary is dedicated to seven areas of focus to build international relationships, improve lives and create a better world. As one of our key areas of focus, disease prevention is very important to the Rotary community ( <https://www.rotary.org/en/our-causes/fighting-disease> ).

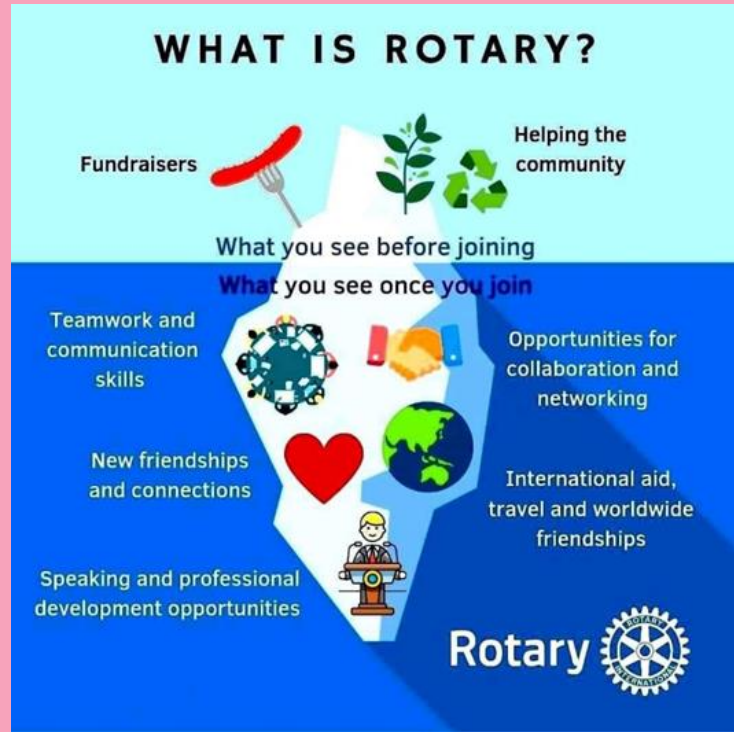


Rotary's top priority is the eradication of polio, but our members take on far greater responsibilities to fight disease. Rotary sets up health camps and training facilities in developing countries and in communities struggling with HIV/AIDS, malaria and other diseases. Rotary also designs and builds the infrastructure for doctors, nurses, governments, and partners to reach the one in six people in the world who can't afford to pay for health care.

Disease prevention and treatment takes on many forms, from supporting studies to helping immunize people to improving drinking water and sanitation infrastructure. The world relies on Rotary to tackle these global challenges, and to set an example for others to follow. For more information on our Polio Eradication efforts, view

( <https://www.youtube.com/watch?v=LY7BgdBEmIM> ).

## Rotary Wisdom:



**Rotary International Data: Courtesy PDG Devendra Shastri**

# Programs of the Rotary Foundation

## PROGRAMS

(All figures are as of 30 June 2020 and in U.S. dollars.)



### PolioPlus

Since 1988, Rotary and our partners have immunized nearly 3 billion children against polio. As of June 2020, Rotary had committed more than \$2.1 billion to global polio eradication, seeking to eliminate the wild poliovirus in the last two countries where it remains endemic and to ensure that it does not return elsewhere. **In 2019-20, program awards, including PolioPlus Partners grants, totaled \$151.8 million.**

### Rotary Peace Centers

Each year, the Foundation supports the training of peace fellows at six Rotary Peace Centers, where they earn master's degrees or professional development certificates. Since 2002-03, 1,370 fellows from more than 110 countries have participated. **In 2019-20, 69 fellows from 35 countries began their studies at the Rotary Peace Centers, and program awards for the fellows and centers totaled \$4.5 million.**

### District grants

District grants support small-scale, short-term projects related to the Foundation's mission. **In 2019-20, the Foundation approved 490 district grants, and program awards totaled \$33.6 million.**

### Global grants

Global grants fund large-scale international activities with sustainable, measurable results that support Rotary's areas of focus. Activities include humanitarian projects, scholarships, and vocational training teams. **In 2019-20, the Foundation approved 1,359 global grants, and program awards totaled \$95.6 million.**

### Disaster response grants

Rotary's disaster response grants support relief and recovery efforts in areas that have been affected by natural disasters within the past six months. **In 2019-20, the Foundation approved 339 disaster response grants, and program awards totaled \$8.4 million.**

Rotary



SERVE TO  
CHANGE LIVES

ഭരതേജസ്വനി  
റോട്ടറി സർവ്വീസ്

## The origins of Paul Harris Fellow recognition



The Paul Harris Fellow recognition acknowledges individuals who contribute, or who have contributions made in their name, of \$1,000 to **The Rotary Foundation**.

**Rotary established the recognition in 1957** to encourage and show appreciation for substantial contributions to what was then the Foundation's only program, Rotary Foundation Fellowships for Advanced Study, the precursor to Ambassadorial Scholarships.

Z. Baker, 1955-56 RI president, admires a newly minted Paul Harris Fellow medallion at the 1969 Rotary Convention in Honolulu, Hawaii, USA.

The first Paul Harris Fellows included past RI Director Allison G. Brush, who served during the 1937-38 Rotary year, and longtime RI Treasurer Rufus F. Chapin, both for donations made in 1946. Mrs. Adan Vargas was the first woman to receive the recognition, for a gift made in 1953. Mrs. Harry L. Jones was the second, and one of only five people recognized for contributions actually made in that inaugural year.

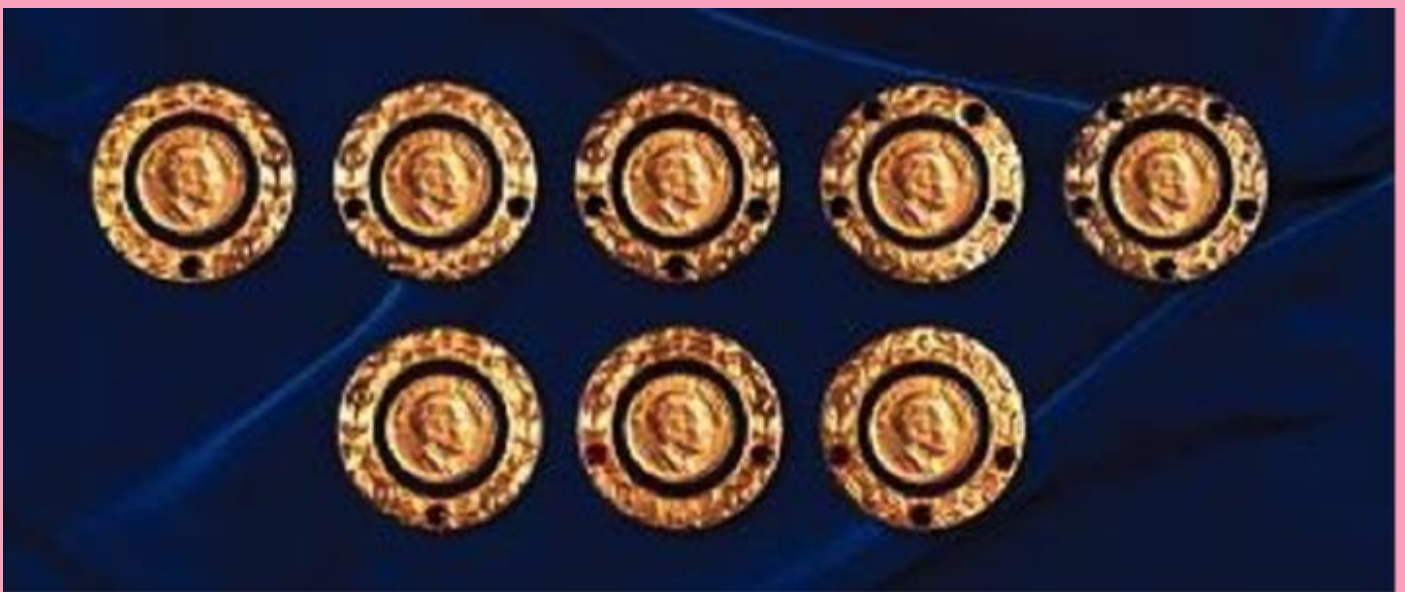


Early Paul Harris Fellows received a certificate of recognition. In 1969, the Foundation unveiled the first Paul Harris Fellow medallion at the Rotary Convention in Honolulu, Hawaii, USA. Japanese metal artist Fiju Tsuda created the piece under the direction of former Foundation Trustee Kyozo Yuasa. Today, Paul Harris Fellows receive a certificate and pin. They are also eligible to buy a Paul Harris Fellow medallion.

Rotarians have a tradition of supporting the Foundation by honoring others. Ida LeTulle Taylor became a Paul Harris Fellow in 1978 when her husband, Vann Taylor, who was serving as a district governor, made a donation in her name in honor of their 34th wedding anniversary. The gift also made her the 25,000th Paul Harris Fellow.

**Currently there are over 15,00,000 Paul Harris Fellows worldwide.**

## **Paul Harris Fellow-Multiple Paul Harris Fellow**



Donors of US\$1,000 or more to the Annual Programs Fund, PolioPlus, or the Humanitarian Grants Program, or people who have that amount contributed in their name, can be recognized as Paul Harris Fellows. Each new Paul Harris Fellow receives a commemorative certificate and a pin.



## Gifts of more than \$2,000

For gifts of \$2,000 or more, a Paul Harris Fellow is eligible for

- Recognition as a Multiple Paul Harris Fellow
- Option to honor someone else as a Paul Harris Fellow with their Foundation recognition points (formerly called “available credit”)
- Multiple Paul Harris Fellow pin with additional stones

## Recognition levels are based on the following guidelines:

Recognition Total	Pin Level
US\$2,000 to 2,999.99	one sapphire
3,000 to 3,999.99	two sapphires
4,000 to 4,999.99	three sapphires
5,000 to 5,999.99	four sapphires
6,000 to 6,999.99	five sapphires
7,000 to 7,999.99	one ruby
8,000 to 8,999.99	two rubies
9,000 to 9,999.99	three rubies

## Replacing Recognition Items

You may replace a recognition pin or other recognition item by filling out the Recognition Replacement Form (PDF) and sending it to The Rotary Foundation.

**Let's talk about one of Rotary's #Causes:**

## **Saving Mothers and Children**



**An estimated 5.2 million children under the age of five die each year because of malnutrition, inadequate health care, and poor sanitation** — all of which can be prevented. Saving Mothers and Children is a priority for Rotary clubs across the world, who help expand access to quality care, so mothers and children everywhere can have the same opportunities for a healthy future.

A hospital in Brazil's Ribeira Valley couldn't support the increasing number of infants in need of critical care, having only seven NICU incubators. Patients who could afford a private hospital transferred, but those who couldn't were forced to travel far distances to other state-run facilities. Rotary members in Brazil and Japan partnered to apply for a Rotary global grant. The \$172,500 grant provided five NICU incubators, five ventilators, three heated cribs, five vital-sign monitors, and a therapy unit to treat babies with jaundice. Rotary members also used the grants to run a

campaign informing the public about local prenatal care workshops run by healthcare workers.

**Want to help women and children? Here are a couple ideas:**

Create a meal train for a new mom

Volunteer at a local women's shelter